

Description

TOP FORMPLY – premium formwork solution engineered for the most demanding construction environments. Designed to deliver exceptional durability and consistency, it is the definitive choice for large-scale infrastructure and high-rise projects. By minimizing material replacement and ensuring a flawless concrete finish, TOP FORMPLY helps builders achieve efficiency, reliability and uncompromising quality.

Specifications

Properties	
Production	Made in Vietnam
Structural rating	Structural
Wood Origin	Legally sourced plantation wood. FSC available on request.
Film Color	Dark Brown, Black and Brown (HTPLY logo / Customers logo on request)

Sizes (mm): 2440*1220, 2500*1250 & 610*2500

Nominal Thickness (mm)	9	12	15	17	18	20	21	24	27	30
Number of Plies	5	7	9	11	11	13	13	15	17	19

*Other sizes available on request.

Technical information	
Formaldehyde Emission Class	E0/E0.5- EN 717-2:1995
Glue	Phenolic glue
Film	Dynea film 40/135gsm 60/165gsm 60/185gsm 80/220gsm
Thickness tolerance	EN 315: 2000
Core Veneer	100% Acacia / Combi Acacia Eucalyptus – jointed by machine
Length/Width tolerance	± 1.0 mm per meter
Squareness tolerance	± 1.0 mm per meter
Bonding Strength/Shearing test	EN 314 Class 3
Number of Cycles	Up to 20 times (double sides, full sheet)
Edge treatment	The edges are painted by brown/black waterproof paint.
Min bending strength	
Parallel to the width of panel	50 N/mm ² EN 310:1993
Parallel to the length of panel	30 N/mm ² EN 310:1993
Mean modulus of elasticity	
Parallel to the width of panel	5000 N/mm ² EN 310:1993
Parallel to the length of panel	3000 N/mm ² EN 310:1993

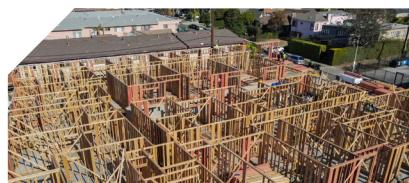
Packaging

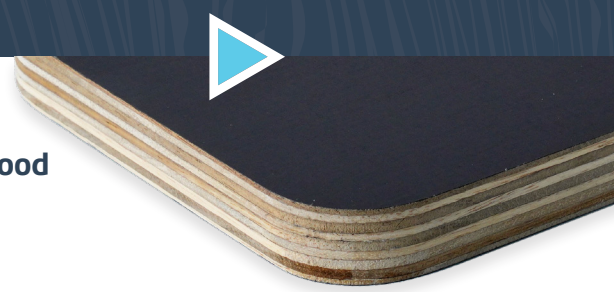
Characteristics	Dimension (mm): 2440*1220									
Thickness (mm)*	9	12	15	17	18	20	21	24	27	30
Number of boards per Pallet	104	80	65	57	54	48	46	40	35	32
Pallets per Container	16	16	16	16	16	16	16	16	16	16

Characteristics	Dimension (mm): 2500*1250									
Thickness (mm)*	9	12	15	17	18	20	21	24	27	30
Number of boards per Pallet	100	76	60	54	52	46	44	38	33	30
Pallets per Container	16	16	16	16	16	16	16	16	16	16

Characteristics	Dimension (mm): 610*2500					
Thickness (mm)*	9	12	15	17	18	25
Number of boards per Pallet	108	83	67	58	56	40
Pallets per Container	16	16	16	16	16	16

*Others thicknesses available on request.





Handling & Storage Guidelines

Storage Conditions

Keep panels in a dry, clean, and well-ventilated environment. Avoid exposure to moisture, rain, or high temperatures. Store sheets horizontally on level, evenly spaced bearers, ensuring no direct ground contact to prevent warping and contamination.

Machining & Processing

Always use professional-grade tools for cutting, drilling, or shaping.

For optimal results, use a circular saw blade with approximately 350 mm diameter, 3.0–3.5 mm thickness, more than 100 teeth, and a rotation speed between 3,000 and 6,000 rpm.

Edge Protection

After any cutting or drilling, reseal all exposed edges with a suitable waterproof coating to maintain panel durability and prevent moisture ingress.

Handling Practices

Handle panels carefully during transportation and installation. Avoid dropping or rough handling, especially from height, to prevent structural damage and ensure jobsite safety.

Release Agent Application

Apply an appropriate formwork release agent prior to each concrete pour. This helps maintain a clean surface, simplifies stripping, and prolongs the service life of the plywood.

Installation Method

Fix panels using screws in combination with washers or support pads. Where possible, secure from the underside to protect the film surface. The use of nails is not recommended as it may damage the panel.

Cleaning & Maintenance

After use, clean panels promptly to remove any concrete residue. Use suitable tools and avoid aggressive methods that may damage the film surface or edges, ensuring longer reuse cycles.

